



Product Service

Attestation of Conformity

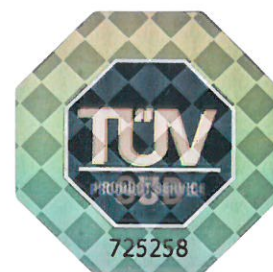
No. N8A 18 01 83449 021

Holder of Certificate: LS Daewon Co., Ltd.94, Robot land-ro 249 beon-gil
Seo-gu, Incheon 404-170
REPUBLIC OF KOREA**Product: Sanitary items
(Electric Bidet Seats)**

This Attestation of Conformity is issued on a voluntary basis according to the Low Voltage Directive 2014/35/EU relating to electrical equipment designed for use within certain voltage limits. It confirms that the listed equipment complies with the principal protection requirements of the directive and is based on the technical specifications applicable at the time of issuance. It refers only to the particular sample submitted for testing and certification. See also notes overleaf.

Test report no.: CPSA01069218**Date,** 2018-01-22

(Brian(Soo-Young) Cha)



CE After preparation of the necessary technical documentation as well as the EU conformity declaration the required CE marking can be affixed on the product. That declaration of conformity is issued under the sole responsibility of the manufacturer. Other relevant EU-directives have to be observed.

Page 1 of 2



Attestation of Conformity

No. N8A 18 01 83449 021

Model(s):

DIB-1500, DB400, EB1500, RX09, HDB-1500, BTB-201, DIB-W1500, C500, CH-05, DW05, FL-130, K5, DIB-C850, DIB-J850, DT850, DIB-1500R, Air POWER wash Professional, MBE802R, DB500R, EB-1500R, RX13, HDB-1500R, BTB-201R, DIB-W1500R, C700, W-1500, PRISTINE 501R, CH-07, DW07, FL-150, K7, DIB-C850R, DIB-850, DIB-J850R, DT-850R, A750R, DIB-1300, DIB-3300, EB-1300, HDB-1300, DIB-W1300, C300, Pristine 302, Pristine 202, CH-03, DW03, FL-120, K3, DIB-C830, DIB-J830, DT-830, DIB-1100, EB-1100, HDB-1100, DIB-W1100, C100, Pristine 101, CH-01, DW01, FL-110, K1, DIB-C810, DIB-J810, DT-810, DIB-2500R, Earth, UOON-2500R, DBT-201R, HDB-2500R, DIB-750, BW-103R, DIB-W2500R, DIB-C750R, DIB-J750R, DT-750R, DIB-2500, DIB-2000, UOON-2500, HDB-2500, DIB-W2500, BW-103, DIB-C750, DIB-J750, DT-750, DIB-2300, HDB-2300, DIB-W2300, BW-102, DIB-C730, DIB-J730, DT-730, DIB-2100, HDB-2100, DIB-W2100, BW-101, DIB-C710, DIB-J710, DT-710, VSS-68S, VSS-68R

Parameters:

| | |
|--|------------|
| Rated input voltage: | 220-240 V~ |
| Rated frequency: | 50/60 Hz |
| Rated input power: | 1670 W |
| Protection class: | I |
| Degree of protection against ingress of liquids: | IPX4 |

Tested according to:

EN 60335-1:2012/A11:2014
EN 60335-2-84:2003/A1:2008
EN 62233:2008